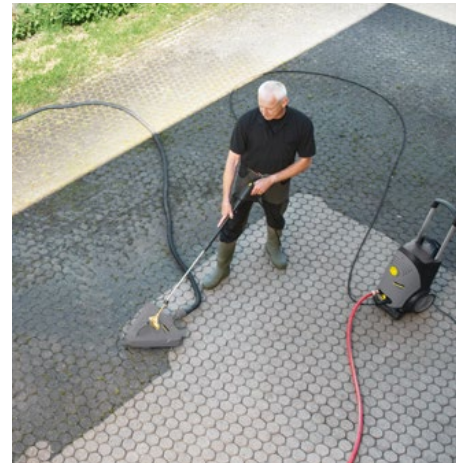




## Cost-effective solutions for all applications.

Pressure washer performance for hard-surfaces.







## Pressure washer performance made easy.

Kärcher hard-surface cleaners are innovative accessories that attach to hot or cold water pressure washers and allow you to clean concrete and other hard surfaces faster and more efficiently than with conventional pressure washers and/or scrubber driers. These rugged units save you time and money, and are an environmentally friendly cleaning solution. They boast high-quality components and options (e.g. stainless steel, robust plastic housing, heavy-duty Kärcher nozzle kits, replaceable brush crowns) that provide versatility, making them highly adaptable to a variety of indoor and outdoor cleaning challenges. Additional Kärcher innovations such as integrated cleaning agent dosing units on the FR 50, a suction connection on the FR 30 ME, and an integrated suction unit on the FRV 30 give added value and improved functionality to this already-impressive lineup of equipment.

Regardless of which hard-surface cleaner you choose, they all share two important traits: excellent product quality, and unparalleled operating comfort.

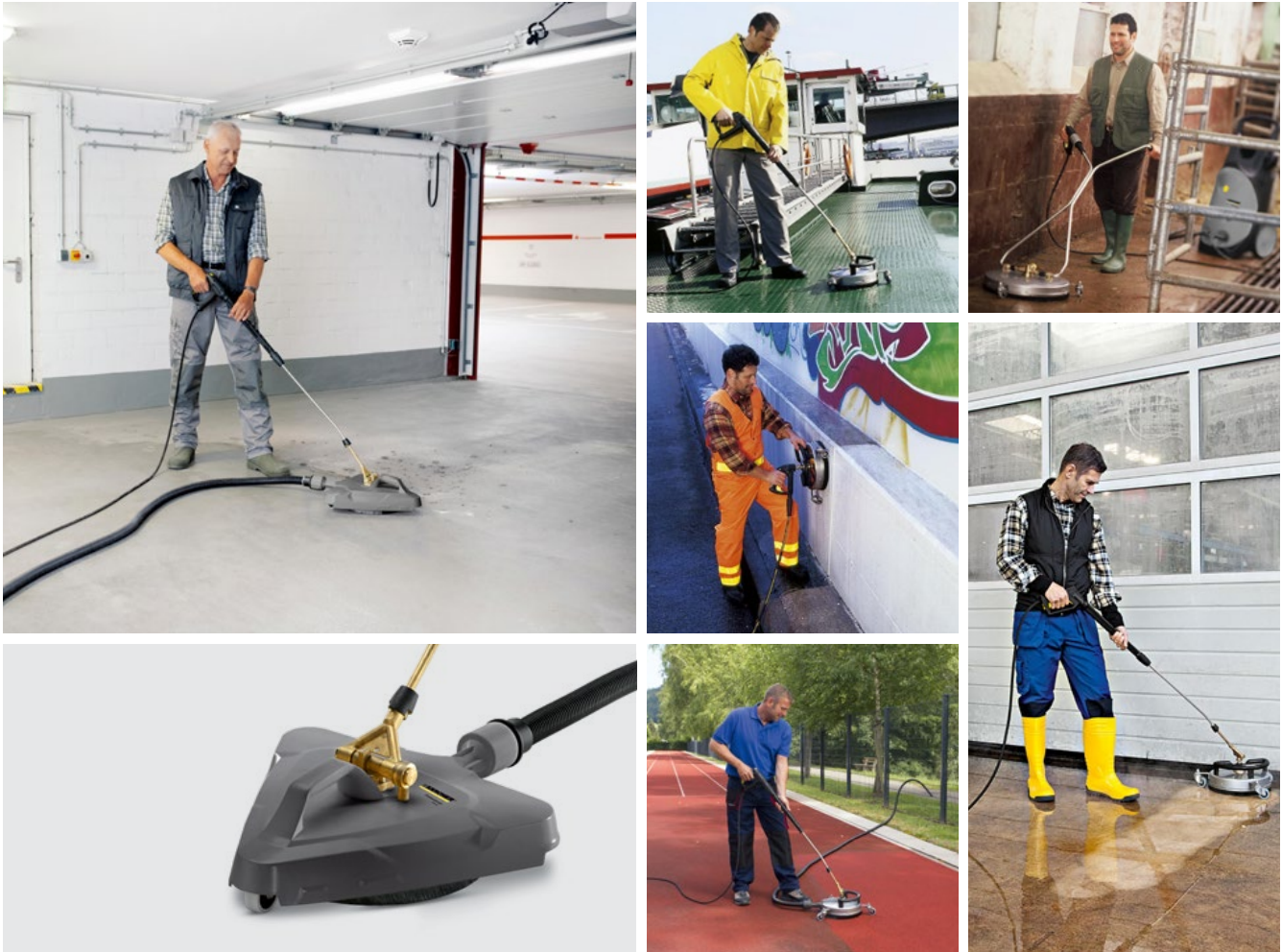






## Impressive cleaning ability, inside and out.

Pressure washers are a great solution for most cleaning challenges. However, there are situations in which using them would be time-consuming and inefficient. Kärcher's hard-surface cleaners are advantageous in these instances, achieving up to ten times the performance per square foot, and are designed to tackle your toughest cleaning needs both inside and out.



### Clean and dry your hard surfaces in a single step.

The FRV 30 is the first, and only, hard surface cleaner in its class that enables high-pressure cleaning and suction in a single step with no need to connect a wet/dry vacuum cleaner. The innovative jet nozzle on the rear of the cover generates a vacuum that directly conveys the wastewater into the extraction nozzle and on through the drain hose to a discharge point, or upwards to a maximum height of 5 feet. Optional extension hoses can be used to expand the cleaning radius up to 49 feet. The FRV 30 can be attached to any Kärcher high-pressure cleaner with a performance range of 2.64-4.40 GPM, and is suitable for use with water temperatures as high as 140°F. There is no need to rinse away the dirty water after cleaning, saving you significant time, water, and energy. The cleaned surfaces are ready

for use again almost immediately. The FRV can also be used in places that have no floor drain, expanding its versatility. It can be used to clean underground garages without flooding, or to eliminate dirt and water from basements. Problematic gaps between tiles – such as those found in public restrooms – are no longer troublesome. The FRV 30 is also ideally suited for façade cleaning and for use in cases where the dirty water does not drain away into sewers or groundwater, and needs to be reclaimed. The robust plastic cover prevents the water from splashing back onto the operator. The angle joint between the cover and jet tube enables trouble-free maneuvering even in small spaces. And the rotating spray arm with its ceramic bearing and high-performance flat stream jets powerfully and thoroughly loosen dirt and debris.

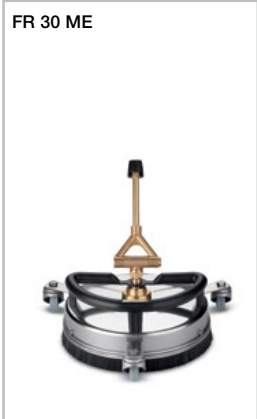
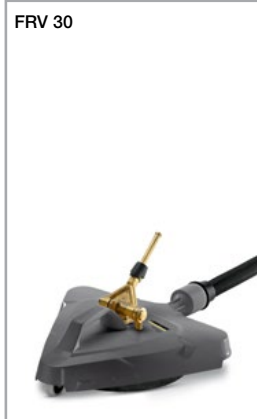
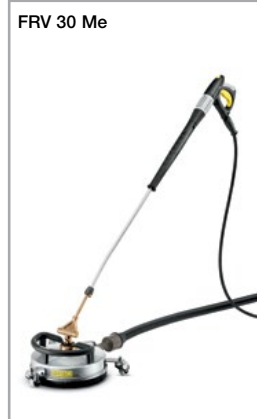

## It's the right machine for a variety of different uses!

Kärcher hard-surface cleaners are the ideal solution for practically every scenario imaginable. Local authorities and cleaning service providers who use them are able to complete their varied cleaning tasks in schools, sports facilities, and public areas more quickly and cost effectively. In the automotive industry, they are used in the workshop, forecourt, and washing bays. Kärcher hard-surface cleaners are indispensable in areas with elevated hygiene standards such as kitchens, sanitary facilities, health and spa centers, and food production facilities.

Equipment	FR 30 ME	FRV 30	FRV 30 ME	FR 50
<b>For use with</b>				
HD (to 140°F)	■	■	■	■
HDS (to 176°F)	■		■	■
<b>Sectors and application areas</b>				
Food industry (floor and wall cleaning in food processing companies)	■	■	■	■
Agricultural sector (outside areas)	■	■	■	■
Automotive sector (workshops, washing bays, outside areas)	■	■	■	■
Hotel industry (kitchens, sanitary facilities, swimming pool and sauna areas)	■	■	■	
Hospitals, rest homes	■	■	■	
Trades		■	■	
Industry (production halls, warehouses, sanitary facilities, outside areas)	■	■	■	
Cleaning service providers (outside areas, courtyard entrances)	■	■	■	■
Local authorities (fire stations, paths, public toilets, car parks, schools, sports facilities, underpasses)	■	■	■	■

■ Recommended

### Performance ft<sup>2</sup>/h

1,615 ft <sup>2</sup> /h	2,153 ft <sup>2</sup> /h	2,691 ft <sup>2</sup> /h	2,691 ft <sup>2</sup> /h
FR 30 ME	FRV 30	FRV 30 Me	FR 50
			

Guide values; dependent on surface type, degree of contamination, and device used

## Diverse performance, built to last.

All Kärcher hard-surface cleaners have robust and powerful technology and standardised connections and adapters that enable them to be easily connected with Kärcher HD/HDS high-pressure cleaners and with HD guns. The right hard-surface cleaner for every single task.



### Integrated direct suction function.

The FRV 30 has an additional jet nozzle that generates a suction effect that moves dirty water into the drain hose and away from the clean surface. This is an enormous advantage – not only for interior cleaning but also for saving time and allowing the surfaces to be cleaned and ready for use again.



### Cleaning power that doesn't leave a trace.

Three steering rollers provide the FRV 30 with excellent maneuverability on all surfaces. They are efficient and virtually unnoticeable, leaving no track marks behind at all.



### Handle for wall cleaning.

The FR 30 ME, FR 30, and FRV 30 hard-surface cleaners come standard with an ergonomic handle, allowing them to be used for cleaning walls comfortably and safely.



### Full-blast cleaning power.

All Kärcher hard-surface cleaners are equipped with a rotating nozzle bar and Kärcher power nozzles that provide 40% higher cleaning performance and an even surface finish that won't leave behind streaks.



FRV 30

FR 30 ME

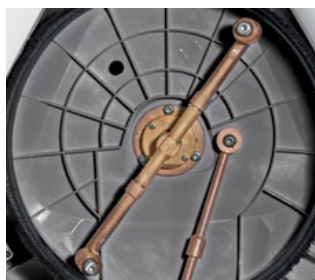
FRV 30 ME

FR 50

### Technical data

<b>Diameter</b>	inches	12 (300 mm)	12 (300 mm)	12 (300 mm)	20 (500 mm)
<b>Max. working pressure</b>	PSI	3,626 (250 bar)	3,626 (250 bar)	3,626 (250 bar)	3,626 (250 bar)
<b>Water flow rate</b>	GPM	2.64-4.40 (600-1,000 l/h)	2.2-4.8 (500-1,100 l/h)	2.2-5.72 (600-1,300 l/h)	2.9-7.9 (650-1,800 l/h)
<b>Max. temperature</b>	°F	140 (60 °C)	176 (80 °C)	176 (80 °C)	176 (80 °C)
<b>Weight</b>	lbs.	8 (3.5 kg)	9 (4.2 kg)	10.36 (4.7 kg)	32 (14.5 kg)
<b>Nozzle kit</b>		□	□	□	□
<b>Nominal width of suction hose</b>	inches	1.26 (32 mm)	–	1.26 (32 mm)	–
<b>Min. delivery height of wastewater</b>	feet	5 (1.5 m)	–	5 (1.5 m)	–
<b>Min. delivery length of wastewater</b>	feet	49 (15 m)	–	49 (15 m)	–
<b>Order No.</b>		2.642-999.0	2.640-355.0	2.642-911.0	2.640-679.0

■ Included in delivery. □ Optional accessory.



#### High-quality ceramic bearings.

Double ceramic bearings on the rotating spray arm ensure a long service life.



#### High-suction connection.

When connected to a compatible wet/dry vacuum cleaner, the FR 30 ME can be used to clean inside. The suction hose for extracting wastewater is attached directly to the housing of the hard-surface cleaner, making the toughest cleaning challenges a breeze!



#### Clean without leaving tracks behind.

The FR 30 ME and FR 50 hard-surface cleaners have a stainless steel housing with a replaceable brush crown and come standard with no-track steering rollers. They can be used with water temperatures up to 176° F.



#### Dosed cleaning agent.

Only the Kärcher FR 50 hard-surface cleaner has a valve for the low-pressure intake of cleaning agents. The high-pressure line is integrated into the handle, eliminating the need for additional high-pressure hose.

## Accessories



Order No. Description

#### FRV series nozzle kits

2.642-430.0	1	Nozzle kit, 035 (includes high pressure nozzle and venturi nozzle)
2.642-431.0	1	Nozzle kit, 040 (includes high pressure nozzle and venturi nozzle)
2.642-432.0	1	Nozzle kit, 045 (includes high pressure nozzle and venturi nozzle)
2.642-433.0	1	Nozzle kit, 050 (includes high pressure nozzle and venturi nozzle)

#### FR series nozzle kits

2.640-442.0		Nozzle kit, 032
2.639-188.0		Nozzle kit, 040
2.640-781.0		Nozzle kit, 062

#### Accessories

9.315-002.0		Adapter NPT 1/4" x M18 x 1.5 (for attaching North American-style wands)
4.440-939.0	2	FR extension hose, 16' with coupling
4.440-938.0		FRV 30 suction hose DN 32
4.441-040.0	3	Extension suction hose, 16' with coupling (fits FRV 30 Me)
6.902-077.0		Drain hose coupling
2.042-001.0		Hose clamp for wall mounting
4.402-071.0		Wall cleaner adapter
2.642-528.0	4	Suction cup, drain hose retainer (for affixing drain hose to walls, sinks, toilets, etc.)
2.642-532.0	5	Course dirt catcher (for collecting debris from drain hose)
6.371-293.0		Brush crown - replacement bristles